

APPENDIX

Figure A1. Hemlock woolly adelgid management areas in North Carolina and Tennessee

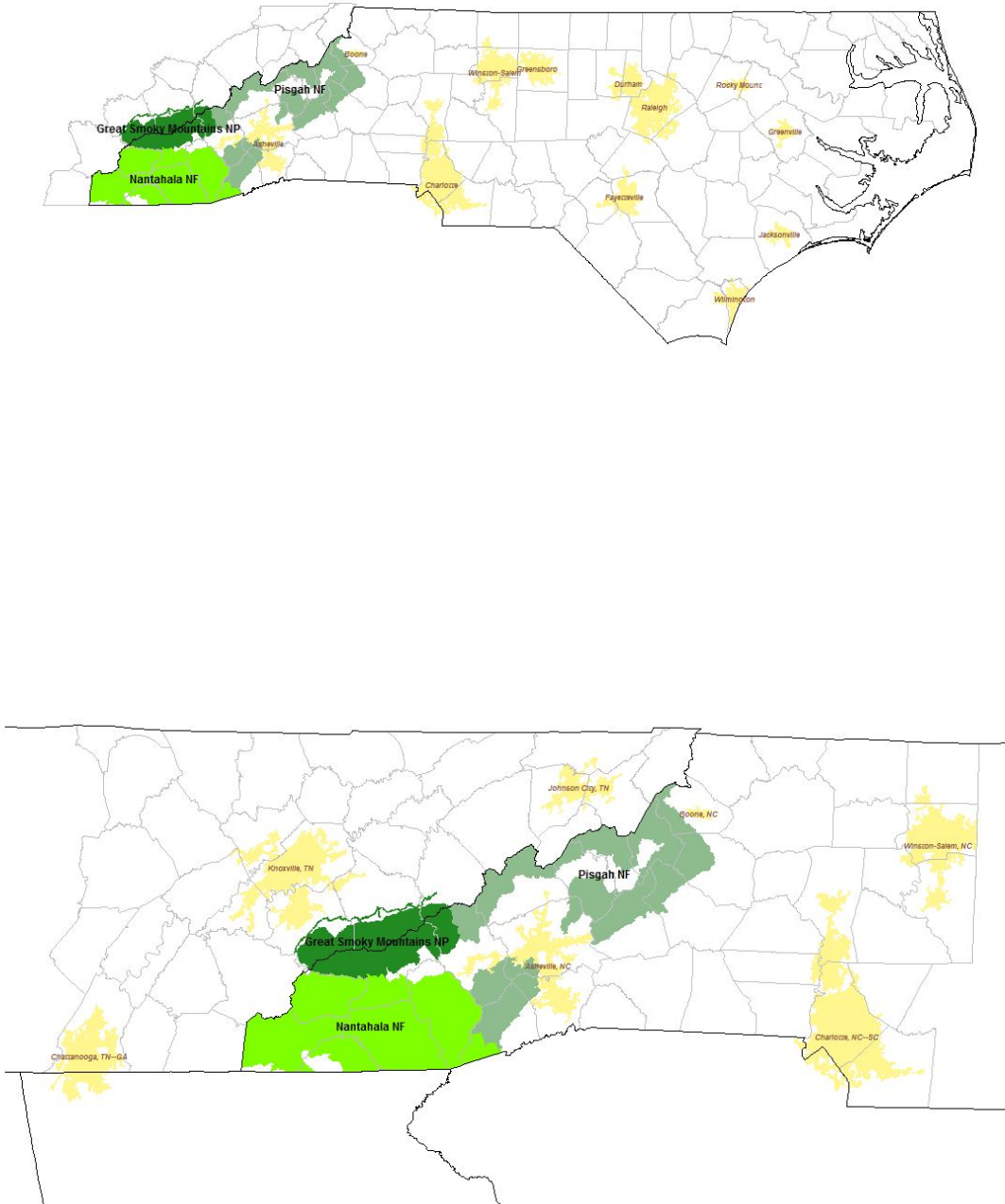


Table A1. Stated attribute non-attendance

	Bounded	Repeated	All
Number of obs.	469 <i>51.71%</i>	438 <i>48.29%</i>	907 <i>100%</i>
Cost	70 <i>14.93%</i>	83 <i>18.95%</i>	153 <i>16.87%</i>
Ecological area	57 <i>12.15%</i>	64 <i>14.61%</i>	121 <i>13.34%</i>
Social area	120 <i>25.59%</i>	102 <i>23.29%</i>	222 <i>24.48%</i>
Treatment method	64 <i>13.65%</i>	68 <i>15.53%</i>	132 <i>14.55%</i>
Note: The count of stated attribute non-attendance is reported above the percentage of the sample.			

Table A2. Latent class models

	1st, 2nd, and 3rd situations			
	Bounded		Repeated	
	Class 1	Class 2	Class 1	Class 2
COST	-0.00504**	-0.00826***	-0.01084***	-0.00416**
	(0.00253)	(0.00260)	(0.00181)	(0.00182)
ECOL	-0.04162	-0.03638	0.12286***	0.01765
	(0.04818)	(0.03867)	(0.04470)	(0.05370)
SOCIAL	-0.01703	-0.01893	0.02281	-0.05139
	(0.04890)	(0.03984)	(0.04000)	(0.05904)
BIOL	2.69844***	0.16004	-0.64583	2.71958***
	(0.89647)	(0.38976)	(0.50753)	(0.71230)
CHEM	2.61063***	-0.05023	-1.03611**	1.77971***
	(0.95087)	(0.39676)	(0.47029)	(0.65642)
Probclass	0.46812***	0.53188***	0.58492***	0.41508***
AIC	1611.8		1637.1	
<p>Notes: The estimated coefficients are reported above with their clustered standard errors in parentheses (st. er.). The statistical significance is reported using the following convention: * p<0.05, ** p<0.01, *** p<0.001.</p>				

Table A3. The 2^k cases of attribute non-attendance in the 2017 SAFMS

	PAYMENT	SCOPE		TREATMENT		N	%
Class	COST (β_1)	ECO (β_2)	SOC (β_3)	BIO (β_4)	CHEM (β_5)		
1	0	β_2	β_3	β_4	β_5	66	7.28
2	β_1	0	β_3	β_4	β_5	13	1.43
3	β_1	β_2	0	β_4	β_5	92	10.14
4	β_1	β_2	β_3	0	0	40	4.41
5	0	0	β_3	β_4	β_5	3	0.33
6	0	β_2	0	β_4	β_5	19	2.09
7	0	β_2	β_3	0	0	17	1.87
8	β_1	0	0	β_4	β_5	38	4.19
9	β_1	0	β_3	0	0	6	0.66
10	β_1	β_2	0	0	0	12	1.32
11	0	0	0	β_4	β_5	9	0.99
12	0	0	β_3	0	0	5	0.55
13	0	β_2	0	0	0	5	0.55
14	β_1	0	0	0	0	18	1.98
15	0	0	0	0	0	29	3.20
16	β_1	β_2	β_3	β_4	β_5	535	58.99
Σ						907	100

Table 4A. Equality constrained Latent class models of the 1st and 2nd situations using inferred ANA

	Bounded				Repeated			
	ECLC scope		ECLC cost		ECLC scope		ECLC cost	
	Scope non-attendance class	Full attendance class	Cost non-attendance class	Full attendance class	Scope non-attendance class	Full attendance class	Cost non-attendance class	Full attendance class
COST	-0.00447***	-0.00447***	0.0	-0.01751***	-0.00714***	-0.00714***	0.0	-0.02853***
	(0.00147)	(0.00147)	(0.0)	(0.00396)	(0.00146)	(0.00146)	(0.0)	(0.00802)
ECOL	0.0	-0.27976	-0.01891	-0.01891	0.0	0.37016	0.03889	0.03889
	(0.0)	(0.54986)	(0.02874)	(0.02874)	(0.0)	(0.35381)	(0.03343)	(0.03343)
SOCIAL	0.0	-0.77592	-0.02098	-0.02098	0.0	0.66116	0.03655	0.03655
	(0.0)	(0.82176)	(0.02908)	(0.02908)	(0.0)	(0.45117)	(0.03414)	(0.03414)
BIOL	1.33598***	1.33598***	0.95110***	0.95110***	0.46170**	0.46170**	0.75063**	0.75063**
	(0.34443)	(0.34443)	(0.31629)	(0.31629)	(0.22313)	(0.22313)	(0.35201)	(0.35201)
CHEM	1.03256***	1.03256***	0.64589**	0.64589**	-0.38041	-0.38041	0.06157	0.06157
	(0.34120)	(0.34120)	(0.31469)	(0.31469)	(0.24255)	(0.24255)	(0.34023)	(0.34023)
Class probability	0.83090***	0.16910***	0.66304***	0.33696***	0.73732***	0.26268***	0.60557***	0.39443***
AIC	1297.1		1293.0		1129.6		1141.7	

Notes: The estimated coefficients are reported above with their clustered standard errors in parentheses (st. er.). The statistical significance is reported using the following convention: * p<0.05, ** p<0.01, *** p<0.001.