

Appendix Table A1*Raw Gaps in Whether Suspended Across Districts, Across Schools, and Within Schools*

Grade	Source of gap	Black/White		Poor/Non-poor	
K	Across districts	0.004	13.5%	0.002	11.0%
	Across schools	0.008	29.9%	0.007	32.0%
	Within school	0.015	56.7%	0.012	57.1%
	Overall	0.026		0.022	
Grade 1	Across districts	0.011	19.4%	0.008	16.1%
	Across schools	0.020	34.1%	0.019	38.8%
	Within school	0.027	46.5%	0.022	45.1%
	Overall	0.058		0.050	
Grade 2	Across districts	0.019	22.1%	0.012	16.2%
	Across schools	0.029	34.6%	0.030	41.6%
	Within school	0.037	43.3%	0.031	42.3%
	Overall	0.085		0.073	
Grade 3	Across districts	0.022	20.2%	0.015	15.0%
	Across schools	0.038	35.0%	0.042	41.8%
	Within school	0.049	44.8%	0.043	43.2%
	Overall	0.109		0.100	
Grade 4	Across districts	0.023	16.4%	0.018	13.0%
	Across schools	0.052	37.0%	0.058	41.6%
	Within school	0.066	46.6%	0.063	45.4%
	Overall	0.142		0.139	
Grade 5	Across districts	0.018	12.2%	0.016	10.0%
	Across schools	0.053	36.1%	0.063	40.1%
	Within school	0.076	51.7%	0.078	50.0%
	Overall	0.148		0.156	
Grade 6	Across districts	0.029	14.1%	0.023	10.2%
	Across schools	0.067	32.6%	0.080	35.4%
	Within school	0.109	53.2%	0.123	54.4%
	Overall	0.205		0.226	
Grade 7	Across districts	0.026	12.5%	0.022	9.3%
	Across schools	0.063	30.8%	0.078	32.5%
	Within school	0.117	56.7%	0.140	58.2%
	Overall	0.206		0.240	
Grade 8	Across districts	0.021	11.2%	0.018	8.1%
	Across schools	0.062	32.8%	0.075	34.6%
	Within school	0.106	56.0%	0.125	57.4%
	Overall	0.189		0.218	
Grade 9	Across districts	0.018	10.3%	0.020	9.6%
	Across schools	0.040	22.8%	0.055	26.1%
	Within school	0.119	66.9%	0.135	64.3%
	Overall	0.177		0.209	
Grade 10	Across districts	0.014	9.3%	0.014	9.0%
	Across schools	0.034	22.3%	0.042	25.9%
	Within school	0.103	68.4%	0.105	65.1%
	Overall	0.151		0.161	
Grade 11	Across districts	0.005	3.7%	0.011	8.2%
	Across schools	0.028	23.3%	0.034	26.7%
	Within school	0.089	73.0%	0.084	65.1%
	Overall	0.122		0.129	
Grade 12	Across districts	-0.005	-6.1%	0.004	4.2%
	Across schools	0.018	21.5%	0.023	25.0%
	Within school	0.072	84.6%	0.066	70.8%
	Overall	0.085		0.094	

Appendix Table A2*Raw Gaps in Number of Days Suspended Across Districts, Across Schools, and Within Schools*

Grade	Source of gap	Black/White		Poor/Non-poor	
K	Across districts	0.554	47.0%	0.263	34.7%
	Across schools	0.294	25.0%	0.231	30.5%
	Within school	0.329	28.0%	0.264	34.8%
	Overall	1.177		0.758	
Grade 1	Across districts	0.605	38.5%	0.509	36.4%
	Across schools	0.403	25.7%	0.477	34.1%
	Within school	0.562	35.8%	0.412	29.5%
	Overall	1.569		1.398	
Grade 2	Across districts	0.644	36.8%	0.521	30.6%
	Across schools	0.503	28.8%	0.563	33.1%
	Within school	0.603	34.4%	0.617	36.3%
	Overall	1.750		1.701	
Grade 3	Across districts	0.544	30.9%	0.469	24.0%
	Across schools	0.583	33.1%	0.696	35.5%
	Within school	0.632	35.9%	0.793	40.5%
	Overall	1.758		1.958	
Grade 4	Across districts	0.471	25.3%	0.580	25.8%
	Across schools	0.690	37.0%	0.778	34.6%
	Within school	0.702	37.7%	0.888	39.5%
	Overall	1.862		2.246	
Grade 5	Across districts	0.428	24.2%	0.539	23.6%
	Across schools	0.631	35.6%	0.755	33.1%
	Within school	0.713	40.3%	0.985	43.2%
	Overall	1.772		2.279	
Grade 6	Across districts	0.739	29.4%	0.478	17.3%
	Across schools	0.768	30.6%	0.919	33.2%
	Within school	1.005	40.0%	1.367	49.5%
	Overall	2.512		2.764	
Grade 7	Across districts	0.786	30.7%	0.615	22.4%
	Across schools	0.749	29.2%	0.808	29.4%
	Within school	1.029	40.1%	1.327	48.3%
	Overall	2.564		2.750	
Grade 8	Across districts	0.734	32.3%	0.593	26.3%
	Across schools	0.631	27.8%	0.644	28.6%
	Within school	0.905	39.9%	1.017	45.1%
	Overall	2.271		2.255	
Grade 9	Across districts	0.728	32.9%	0.590	28.8%
	Across schools	0.469	21.2%	0.462	22.6%
	Within school	1.017	45.9%	0.994	48.6%
	Overall	2.214		2.046	
Grade 10	Across districts	0.733	37.4%	0.480	31.1%
	Across schools	0.385	19.7%	0.381	24.7%
	Within school	0.842	43.0%	0.680	44.1%
	Overall	1.961		1.541	
Grade 11	Across districts	0.601	35.6%	0.466	33.7%
	Across schools	0.354	21.0%	0.332	24.0%
	Within school	0.734	43.5%	0.585	42.3%
	Overall	1.689		1.383	
Grade 12	Across districts	0.468	39.3%	0.362	36.7%
	Across schools	0.234	19.6%	0.227	23.0%
	Within school	0.491	41.1%	0.397	40.3%
	Overall	1.193		0.986	

Appendix Table A3*Predictors of Length of Suspension (in Days)—Out-of-School Suspensions Only*

	(1)	(2)	(3)	(4)	(5)	(6)	(7)	(8)	(9)	(10)
Black	0.434*** (0.008)	0.108*** (0.005)			0.409*** (0.008)	0.102*** (0.006)	0.086*** (0.006)	0.308*** (0.010)	0.075*** (0.008)	0.061*** (0.008)
Other race	0.201*** (0.015)	0.018 (0.013)			0.186*** (0.015)	0.015 (0.013)	0.011 (0.014)	0.129*** (0.022)	-0.015 (0.019)	-0.011 (0.019)
Poor (always FRPL)			0.361*** (0.009)	0.078*** (0.007)	0.151*** (0.009)	0.040*** (0.007)	0.048*** (0.008)	0.188*** (0.013)	0.089*** (0.011)	0.078*** (0.012)
Sometimes FRPL			0.360*** (0.009)	0.084*** (0.007)	0.211*** (0.009)	0.059*** (0.007)	0.066*** (0.008)	0.197*** (0.013)	0.087*** (0.011)	0.076*** (0.012)
SPED								-0.198*** (0.011)	-0.172*** (0.009)	-0.182*** (0.010)
Male								0.013* (0.007)	0.017*** (0.007)	0.001 (0.007)
Standardized math (<i>t</i> -1)								-0.051*** (0.005)	-0.008* (0.005)	-0.006 (0.005)
Standardized ELA (<i>t</i> -1)								-0.058*** (0.005)	-0.029*** (0.004)	-0.024*** (0.004)
Suspended in prior year							0.155*** (0.005)			0.153*** (0.006)
Constant	1.903*** (0.031)	2.319*** (0.007)	1.981*** (0.032)	2.324*** (0.008)	1.837*** (0.032)	2.280*** (0.008)	2.166*** (0.010)	1.756*** (0.349)	2.251*** (0.014)	2.183*** (0.015)
Observations	2,001,819	2,001,819	2,003,209	2,003,209	2,001,819	2,001,819	1,781,445	861,056	861,056	844,312
R-squared	0.037	0.180	0.033	0.180	0.038	0.180	0.179	0.032	0.177	0.177
Year FE	Yes	No	Yes	No	Yes	No	No	Yes	No	No
Grade FE	Yes	No	Yes	No	Yes	No	No	Yes	No	No
SGY FEs	No	Yes	No	Yes	No	Yes	Yes	No	Yes	Yes

Notes. Table is constructed identically to Table 3 but only codes out-of-school suspensions as suspensions (and disregards in-school suspensions). The unit of observation is the infraction, and the sample is restricted to students who were suspended. All models contain infraction fixed effects. Omitted reference groups are white students, non-poor students (students never eligible for free or reduced-price lunch), and females. The number of days suspended is censored to 20 for suspensions that exceeded 20 days. Standard errors appear in parentheses and account for the clustering of students within school-grade-year. “SGY FEs” refers to school-grade-year fixed effects.

*** $p < .01$, ** $p < .05$, * $p < .1$

Appendix Table A4*Predictors of Length of Suspension for First Offense of Year (in Days)—Out-of-School Suspensions Only*

	(1)	(2)	(3)	(4)	(5)	(6)	(7)	(8)	(9)	(10)
Black	0.413*** (0.008)	0.056*** (0.007)			0.391*** (0.009)	0.052*** (0.008)	0.048*** (0.008)	0.282*** (0.011)	0.032*** (0.012)	0.029*** (0.012)
Other race	0.221*** (0.018)	0.011 (0.017)			0.208*** (0.018)	0.009 (0.017)	0.007 (0.019)	0.167*** (0.027)	0.016 (0.027)	0.015 (0.027)
Poor (always FRPL)			0.320*** (0.010)	0.043*** (0.009)	0.120*** (0.010)	0.025*** (0.009)	0.039*** (0.010)	0.135*** (0.016)	0.044*** (0.015)	0.046*** (0.016)
Sometimes FRPL			0.324*** (0.011)	0.051*** (0.009)	0.187*** (0.010)	0.039*** (0.009)	0.052*** (0.010)	0.152*** (0.016)	0.043*** (0.015)	0.044*** (0.016)
SPED								-0.092*** (0.012)	-0.072*** (0.012)	-0.076*** (0.013)
Male								-0.037*** (0.009)	-0.036*** (0.009)	-0.040*** (0.009)
Standardized math (<i>t</i> -1)								-0.041*** (0.006)	-0.002 (0.006)	-0.001 (0.006)
Standardized ELA (<i>t</i> -1)								-0.042*** (0.006)	-0.013** (0.006)	-0.012* (0.006)
Suspended in prior Year							0.031*** (0.006)			0.028*** (0.009)
Constant	1.678*** (0.033)	2.103*** (0.009)	1.769*** (0.034)	2.100*** (0.010)	1.630*** (0.034)	2.079*** (0.011)	2.033*** (0.013)	1.710*** (0.470)	2.086*** (0.019)	2.073*** (0.020)
Observations	833,129	833,129	833,714	833,714	833,129	833,129	730,433	355,204	355,204	347,220
R-squared	0.050	0.262	0.045	0.262	0.050	0.262	0.261	0.042	0.265	0.264
Year FE	Yes	No	Yes	No	Yes	No	No	Yes	No	No
Grade FE	Yes	No	Yes	No	Yes	No	No	Yes	No	No
School-Grade-Year FE	No	Yes	No	Yes	No	Yes	Yes	No	Yes	Yes

Notes. Table is constructed identically to Table 4 but only codes out-of-school suspensions as suspensions (and disregards in-school suspensions). The unit of observation is the infraction, and the sample is restricted to students who were suspended. All models contain infraction fixed effects. Omitted reference groups are white students, non-poor students (students never eligible for free or reduced-price lunch), and females. The number of days suspended is censored to 20 for suspensions that exceeded 20 days. Standard errors appear in parentheses and account for the clustering of students within school-grade-year. “SGY FEs” refers to school-grade-year fixed effects.

*** $p < .01$, ** $p < .05$, * $p < .1$

Appendix Table A5*Discipline Gaps in Fights Between Black and White Students*

	Number of days suspended				Whether received longer suspension than peer			
	(1)	(2)	(3)	(4)	(5)	(6)	(7)	(8)
Black student	0.054*** (0.010)	0.052*** (0.011)	0.048*** (0.013)	0.041*** (0.012)	0.017*** (0.003)	0.016*** (0.003)	0.013*** (0.003)	0.011*** (0.004)
Student characteristics								
Number of prior fights	0.100*** (0.020)	0.129*** (0.013)	0.105*** (0.020)	0.129*** (0.013)	0.034*** (0.003)	0.040*** (0.004)	0.034*** (0.003)	0.040*** (0.004)
Poor			-0.039 (0.028)	-0.033* (0.019)			-0.005 (0.003)	-0.005 (0.005)
Non-poor			-0.092** (0.041)	-0.105*** (0.025)			-0.025*** (0.005)	-0.035*** (0.007)
SPED			-0.125*** (0.034)	-0.069*** (0.023)			-0.009** (0.004)	-0.026*** (0.007)
Male			-0.103*** (0.039)	-0.02 (0.039)			-0.012*** (0.004)	0.003 (0.012)
Standardized math score (<i>t</i> -1)			0.026 (0.024)	-0.007 (0.015)			-0.003 (0.003)	-0.007 (0.005)
Standardized ELA score (<i>t</i> -1)			-0.064*** (0.024)	-0.017 (0.015)			-0.003 (0.003)	0 (0.005)
Constant	2.892*** (0.027)	2.853*** (0.018)	2.992*** (0.043)	2.890*** (0.040)	0.046*** (0.004)	0.038*** (0.005)	0.058*** (0.006)	0.045*** (0.011)
Observations	40,284	40,284	40,284	40,284	40,284	40,284	40,284	40,284
R-squared	0.008	0.009	0.014	0.016	0.018	0.019	0.021	0.021
School FEs	Yes	No	Yes	No	Yes	No	Yes	No
Fight occurrence FEs	No	Yes	No	Yes	No	Yes	No	Yes

Notes. The unit of observation is the infraction, and the sample is restricted to students who were suspended for fighting (with a student of a different race). The number of prior fights refers to the number of fights for which the student had been suspended earlier in the same school year. Omitted reference groups are white students, sometimes-poor students, students without disabilities, and females. The number of days suspended is censored to 20 for suspensions that exceeded 20 days. Standard errors appear in parentheses and account for the clustering of students within schools.

*** $p < .01$, ** $p < .05$, * $p < .1$

Appendix Table A6*Discipline Gaps in Fights Between Poor and Non-Poor Students*

	Number of days suspended				Whether received longer suspension than peer			
	(1)	(2)	(3)	(4)	(5)	(6)	(7)	(8)
Poor student	0.071*** (0.013)	0.067*** (0.013)	0.049*** (0.018)	0.059*** (0.015)	0.023*** (0.004)	0.023*** (0.004)	0.021*** (0.005)	0.020*** (0.005)
Student characteristics								
Number of prior fights	0.066*** (0.025)	0.121*** (0.020)	0.069*** (0.026)	0.126*** (0.019)	0.038*** (0.004)	0.043*** (0.006)	0.037*** (0.004)	0.044*** (0.006)
Black			0.091** (0.044)	0.065*** (0.025)			0.011** (0.005)	0.020** (0.008)
Other race			0.099 (0.118)	0.019 (0.060)			0.021 (0.013)	0.015 (0.020)
SPED			-0.087 (0.055)	-0.135*** (0.034)			-0.004 (0.006)	-0.023** (0.010)
Male			-0.118** (0.052)	-0.021 (0.049)			0.003 (0.005)	0.005 (0.016)
Standardized math score (<i>t</i> -1)			-0.053 (0.035)	-0.003 (0.020)			-0.007 (0.005)	-0.01 (0.007)
Standardized ELA score (<i>t</i> -1)			0.018 (0.035)	-0.004 (0.018)			0.001 (0.005)	0.005 (0.007)
Constant	3.075*** (0.034)	3.004*** (0.027)	3.093*** (0.055)	2.975*** (0.048)	0.032*** (0.006)	0.025*** (0.008)	0.021*** (0.007)	0.006 (0.015)
Observations	20,380	20,380	20,380	20,380	20,380	20,380	20,380	20,380
R-squared	0.007	0.007	0.011	0.011	0.009	0.009	0.011	0.011
School FEs	Yes	No	Yes	No	Yes	No	Yes	No
Fight occurrence FEs	No	Yes	No	Yes	No	Yes	No	Yes

Notes. The unit of observation is the infraction, and the sample is restricted to students who were suspended for fighting (with a student of a different poverty status). The number of prior fights refers to the number of fights for which the student had been suspended earlier in the same school year. Omitted reference groups are white students, students without disabilities, and females. The number of days suspended is censored to 20 for suspensions that exceeded 20 days. Standard errors appear in parentheses and account for the clustering of students within schools.

*** $p < .01$, ** $p < .05$, * $p < .1$

Appendix Table A7*Gaps in Days Suspended for Black/White and Poor/Non-Poor Fights--Out-of-School Suspensions Only*

	Full sample		First fight of year		First fight ever		First suspension of year		First suspension ever	
	(1)	(2)	(3)	(4)	(5)	(6)	(7)	(8)	(9)	(10)
<u>Panel A: Race comparison</u>										
Black student	0.061*** (0.011)	0.059*** (0.015)	0.049*** (0.011)	0.057*** (0.015)	0.049*** (0.015)	0.040* (0.021)	0.051*** (0.012)	0.065*** (0.019)	0.066*** (0.020)	0.059** (0.029)
Constant	2.954*** (0.032)	3.059*** (0.052)	3.097*** (0.005)	3.220*** (0.045)	3.076*** (0.062)	3.153*** (0.095)	2.967*** (0.006)	3.060*** (0.053)	2.968*** (0.075)	2.974*** (0.125)
Observations	28,268	28,268	21,104	21,104	11,640	11,640	14,928	14,928	7,120	7,120
R-squared	0.008	0.014	0.008	0.008	0.007	0.007	0.009	0.008	0.007	0.007
<u>Panel B: Poverty comparison</u>										
Poor student	0.082*** (0.021)	0.058** (0.027)	0.039** (0.019)	0.014 (0.027)	0.030 (0.027)	0.008 (0.033)	0.077*** (0.024)	0.024 (0.031)	0.105*** (0.029)	0.086** (0.036)
Constant	3.213*** (0.065)	3.262*** (0.109)	3.284*** (0.010)	3.318*** (0.096)	3.335*** (0.049)	3.449*** (0.120)	3.142*** (0.012)	3.155*** (0.118)	3.299*** (0.067)	3.368*** (0.166)
Observations	15,002	15,002	11,706	11,706	8,564	8,564	8,530	8,530	5,562	5,562
R-squared	0.007	0.011	0.007	0.007	0.006	0.006	0.008	0.012	0.008	0.011
Controls for student characteristics	No	Yes	No	Yes	No	Yes	No	Yes	No	Yes
Controls for number of years in data	No	No	No	No	Yes	Yes	No	No	Yes	Yes

Notes. Table is constructed identically to Table 5 but only codes out-of-school suspensions as suspensions (and disregards in-school suspensions). The unit of observation is the infraction, and the sample is restricted to students who were suspended for fighting with a student of a different race (Panel A) or poverty status (Panel B). The “first fight” and “first suspension” sample restrictions apply to both students involved in the fight. For example, the “first fight of year” columns restrict the sample to fights between two students who had not been suspended for a fight earlier in that school year. All models contain school-year fixed effects. Student controls consist of FRPL status (Panel A only), black and other race (Panel B only), special education status, gender, and math and ELA scores from the prior year. The reference group for “Black student” is white students. The reference group for “Poor student” is non-poor students. The number of days suspended is censored to 20 for suspensions that exceeded 20 days. Standard errors appear in parentheses and account for the clustering of students within schools.

*** $p < .01$, ** $p < .05$, * $p < .1$

Appendix Table A8*Who Received Longer Suspensions for Black/White and Poor/Non-Poor Fights--Out-of-School Suspensions Only*

	Full sample		First fight of year		First fight ever		First suspension of year		First suspension ever	
	(1)	(2)	(3)	(4)	(5)	(6)	(7)	(8)	(9)	(10)
Panel A: Race comparison										
Black student	0.019*** (0.004)	0.015*** (0.004)	0.016*** (0.004)	0.015*** (0.004)	0.017*** (0.005)	0.015*** (0.006)	0.020*** (0.004)	0.017*** (0.005)	0.026*** (0.006)	0.024*** (0.007)
Constant	0.037*** (0.005)	0.049*** (0.006)	0.072*** (0.002)	0.083*** (0.005)	0.071*** (0.005)	0.088*** (0.010)	0.070*** (0.002)	0.081*** (0.006)	0.056*** (0.007)	0.063*** (0.014)
Observations	28,268	28,268	21,104	21,104	11,640	11,640	14,928	14,928	7,120	7,120
R-squared	0.018	0.021	0.007	0.01	0.007	0.01	0.008	0.011	0.01	0.011
Panel B: Poverty comparison										
Poor student	0.024*** (0.005)	0.023*** (0.005)	0.018*** (0.006)	0.016*** (0.006)	0.014** (0.007)	0.013* (0.007)	0.029*** (0.007)	0.026*** (0.007)	0.033*** (0.008)	0.031*** (0.008)
Constant	0.036*** (0.007)	0.020** (0.009)	0.077*** (0.003)	0.062*** (0.007)	0.078*** (0.005)	0.056*** (0.011)	0.072*** (0.003)	0.052*** (0.009)	0.062*** (0.007)	0.048*** (0.014)
Observations	15,002	15,002	11,706	11,706	8,564	8,564	8,530	8,530	5,562	5,562
R-squared	0.009	0.011	0.008	0.008	0.007	0.007	0.008	0.010	0.008	0.010
Controls for student characteristics	No	Yes	No	Yes	No	Yes	No	Yes	No	Yes
Controls for number of years in data	No	No	No	No	Yes	Yes	No	No	Yes	Yes

Notes. Table is constructed identically to Table 6 but only codes out-of-school suspensions as suspensions (and disregards in-school suspensions). The unit of observation is the infraction, and the sample is restricted to students who were suspended for fighting with a student of a different race (Panel A) or poverty status (Panel B). The “first fight” and “first suspension” sample restrictions apply to both students involved in the fight. For example, the “first fight of year” columns restrict the sample to fights between two students who had not been suspended for a fight earlier in that school year. All models contain school-year fixed effects (and not fight occurrence fixed effects). Student controls consist of FRPL status (Panel A only), black and other race (Panel B only), special education status, gender, and math and ELA scores from the prior year. The reference group for “Black student” is white students. The reference group for “Poor student” is non-poor students. The number of days suspended is censored to 20 for suspensions that exceeded 20 days. Standard errors appear in parentheses and account for the clustering of students within schools.

*** $p < .01$, ** $p < .05$, * $p < .1$

Appendix Table A9*Robustness of Fight Suspension Disparities to Alternate Censoring of Length of Individual Suspensions and Gaps*

	Max. suspension length: 5 days		Max. suspension length: 10 days		Max. suspension length: 20 days	
	Full sample	First suspension of year	Full sample	First suspension of year	Full sample	First suspension of year
<u>Panel A: Race comparison (black minus white)</u>						
Max. gap in suspension length: 3 days	0.020*** (0.005)	0.018*** (0.005)	0.020*** (0.004)	0.017*** (0.005)	0.017*** (0.005)	0.016*** (0.005)
Max. gap in suspension length: 5 days	0.027*** (0.005)	0.023*** (0.006)	0.029*** (0.006)	0.026*** (0.007)	0.026*** (0.006)	0.027*** (0.007)
Max. gap in suspension length: No max.	0.027*** (0.005)	0.023*** (0.006)	0.046*** (0.007)	0.032*** (0.008)	0.054*** (0.010)	0.041*** (0.011)
<u>Panel B: Poverty comparison (poor minus non-poor)</u>						
Max. gap in suspension length: 3 days	0.030*** (0.006)	0.024*** (0.007)	0.028*** (0.006)	0.025*** (0.007)	0.026*** (0.006)	0.024*** (0.007)
Max. gap in suspension length: 5 days	0.042*** (0.007)	0.036*** (0.009)	0.042*** (0.008)	0.039*** (0.009)	0.040*** (0.008)	0.038*** (0.009)
Max. gap in suspension length: No max.	0.043*** (0.007)	0.037*** (0.009)	0.056*** (0.011)	0.050*** (0.013)	0.071*** (0.013)	0.072*** (0.015)

Notes. Table shows sensitivity of results from Table 5. Panel A, Column 1 (full sample) and Column 7 (first suspension of year) to censoring at different levels. "Max. suspension length" indicates the number of days to which we censored each student's suspension length if it exceeded 20 days. "Max. gap in suspension length" indicates the number of days to which we censored the difference between the fighting students' suspensions lengths. Each estimate comes from a distinct regression. The unit of observation is the infraction, and the sample is restricted to students who were suspended for fighting with a student of a different race (Panel A) or poverty status (Panel B). The "first suspension" sample restrictions apply to both students involved in the fight. These models do not contain covariates but do contain school-year fixed effects. Standard errors appear in parentheses and account for the clustering of students within schools. *** $p < .01$, ** $p < .05$, * $p < .1$

Appendix Table A10*Who Received Longer Suspensions in Fights Between Students of Various Subgroups--First Suspensions of Year*

Student 1	Student 2	Total number of fights	Same suspension length	Student 1 suspended longer	Student 2 suspended longer	Z-score	p-value
<u>Subgroups</u>							
Black	White	10,746	83.4%	9.1%	7.5%	4.253	0.000
Black	Black	43,967	80.4%	--	--	--	--
White	White	12,448	85.5%	--	--	--	--
Poor	NP	5,930	84.0%	9.3%	6.7%	5.115	0.000
Poor	Poor	28,784	81.8%	--	--	--	--
NP	NP	2,014	87.7%	--	--	--	--
Male	Female	9,022	73.5%	13.3%	13.3%	-0.066	0.947
Male	Male	40,906	82.9%	--	--	--	--
Female	Female	20,272	83.6%	--	--	--	--
Low scorer	High scorer	1,863	85.7%	7.7%	6.5%	1.400	0.162
Low scorer	Low scorer	5,204	81.8%	--	--	--	--
High scorer	High scorer	1,032	87.5%	--	--	--	--
<u>Subgroup interactions with race</u>							
Black, Poor	White, Poor	3,153	84.0%	8.5%	7.4%	1.627	0.104
Black, NP	White, NP	277	87.0%	7.2%	5.8%	0.689	0.491
Black, Poor	White, NP	1,564	83.5%	10.2%	6.3%	4.030	0.000
Black, NP	White, Poor	185	85.9%	6.5%	7.6%	-0.407	0.684
Black, Male	White, Male	7,891	84.9%	8.2%	6.9%	3.135	0.002
Black, Female	White, Female	1,713	84.2%	8.8%	7.0%	1.902	0.057
Black, Male	White, Female	486	72.0%	16.5%	11.5%	2.219	0.026
Black, Female	White, Male	656	71.3%	15.4%	13.3%	1.103	0.270
Black, High scorer	White, High scorer	215	89.8%	5.1%	5.1%	0.000	1.000
Black, Low scorer	White, Low scorer	477	83.2%	10.7%	6.1%	2.570	0.010
Black, High scorer	White, Low scorer	67	86.6%	10.4%	3.0%	1.726	0.084
Black, Low scorer	White, High scorer	349	86.5%	8.9%	4.6%	2.266	0.023
<u>Subgroup interactions with poverty</u>							
Poor, Male	NP, Male	4,024	84.8%	8.8%	6.4%	4.166	0.000
Poor, Female	NP, Female	1,309	85.2%	9.1%	5.7%	3.283	0.001
Poor, Male	NP, Female	276	76.1%	13.4%	10.5%	1.049	0.294
Poor, Female	NP, Male	321	76.3%	11.8%	11.8%	0.000	1.000
Poor, High scorer	NP, High scorer	150	88.0%	8.7%	3.3%	1.945	0.052
Poor, Low scorer	NP, Low scorer	169	82.2%	8.3%	9.5%	-0.383	0.702
Poor, High scorer	NP, Low scorer	54	87.0%	11.1%	1.9%	1.954	0.051
Poor, Low scorer	NP, High scorer	125	84.8%	11.2%	4.0%	2.148	0.032

Notes. Table is constructed identically to Table 7 but restricts sample to fights between students who had not previously been suspended that year. The unit of observation is the infraction, and samples are restricted to fights between a student from the first group listed and a student from the second group listed. "Poor" indicates that the student appeared eligible for free or reduced-price lunch in all years of our data. "NP" indicates that the student never appeared eligible for free or reduced-price lunch in our data. "High scorer" is defined as a student in the top quintile of average performance, where average performance is calculated as the mean score across all tested subjects. "Low scorer" is defined as a student in the bottom quintile of performance across all tested subjects. Significance tests assess whether the probability that Group 1 received a longer punishment differs from the probability that Group 2 received a longer punishment. Observation numbers indicate count of observed fights. No covariates were included in these tests. The number of days suspended is censored to 20 for suspensions that exceeded 20 days.

*** $p < .01$, ** $p < .05$, * $p < .1$

Table A11*School-Level Heterogeneity in Discipline Gaps in Fights Between Poor and Non-Poor Students*

Outcome variable	Difference in days suspended (poor minus non-poor)		Poor student received longer suspension	
	Full sample	First suspension of year	Full sample	First suspension of year
Grade levels				
Elementary (K-5)	0.023 (0.021)	0.027 (0.024)	0.022** (0.009)	0.011 (0.010)
Middle (6-8)	0.882 (0.797)	0.061 (0.063)	0.032*** (0.006)	0.026*** (0.007)
High (9-12)	0.068 (0.042)	0.041 (0.040)	0.022** (0.009)	0.025** (0.012)
Administrators' races				
All white	0.588 (0.539)	0.016 (0.043)	0.020*** (0.005)	0.017*** (0.006)
All non-white	0.101*** (0.036)	0.148*** (0.047)	0.033*** (0.009)	0.040*** (0.012)
Both white and non-white	0.136** (0.057)	0.051 (0.059)	0.039* (0.021)	0.017 (0.024)
Students' poverty status				
More than 75% FRPL	0.041 (0.057)	0.043 (0.072)	0.006 (0.020)	0.011 (0.023)
25% to 75% FRPL	0.048 (0.038)	0.062* (0.035)	0.023** (0.011)	0.013 (0.013)
Less than 25% FRPL	0.121*** (0.024)	0.077** (0.032)	0.036*** (0.007)	0.031*** (0.008)
Urbanicity				
Urban	0.001 (0.083)	-0.003 (0.127)	0.017* (0.009)	0.010 (0.012)
Rural	0.082*** (0.022)	0.069*** (0.022)	0.028*** (0.009)	0.033*** (0.011)
Other	0.104*** (0.026)	0.063** (0.025)	0.027*** (0.006)	0.021*** (0.007)
Student controls	No	No	No	No
School FEs	Yes	Yes	Yes	Yes

Notes. Table shows results from models in Table 5, Panel B, Columns 1 (full sample) and 7 (first suspension of year) for difference in days suspended comparison and Table 6, Panel B, Columns 1 and 7 for which student received a longer suspension. The unit of observation is the infraction, and the sample is restricted to students who were suspended for fighting with a student of a different race. The “first suspension” sample restrictions apply to both students involved in the fight. These models do not contain covariates but do contain school-year fixed effects. Standard errors appear in parentheses and account for the clustering of students within schools. The number of days suspended is censored to 20 for suspensions that exceeded 20 days.

*** $p < .01$, ** $p < .05$, * $p < .1$

Appendix Table A12*Assignment of In-School and Out-of-School Suspensions for Fighting--First Suspensions of Year*

Student 1	Student 2	Total number of fights	Both received in-school suspension	Both received out-of-school suspension	Student 1 out-of-school, Student 2 in-school	Student 1 in-school, Student 2 out-of-school	Z-score	p-value
Black	White	10,746	29.9%	65.9%	2.4%	1.9%	2.406	0.016
Black	Black	43,967	31.1%	65.4%	--	--	--	--
White	White	12,448	25.5%	71.4%	--	--	--	--
Poor	Non-poor	5,930	30.4%	66.1%	2.1%	1.4%	2.952	0.003
Poor	Poor	28784	31.7%	64.7%	--	--	--	--
Non-poor	Non-poor	2014	31.2%	65.6%	--	--	--	--

Notes. The unit of observation is the infraction, and samples are restricted to fights between a student from the first group listed and a student from the second group listed. Significance tests assess whether the probability that only Group 1 was suspended out of school differs from the probability that only Group 2 was suspended out of school. Observation numbers indicate count of observed fights. No covariates were included in these tests. The number of days suspended is censored to 20 for suspensions that exceeded 20 days.

*** $p < .01$, ** $p < .05$, * $p < .1$

Figure A1. Student Enrollment by District's Free Lunch Eligibility

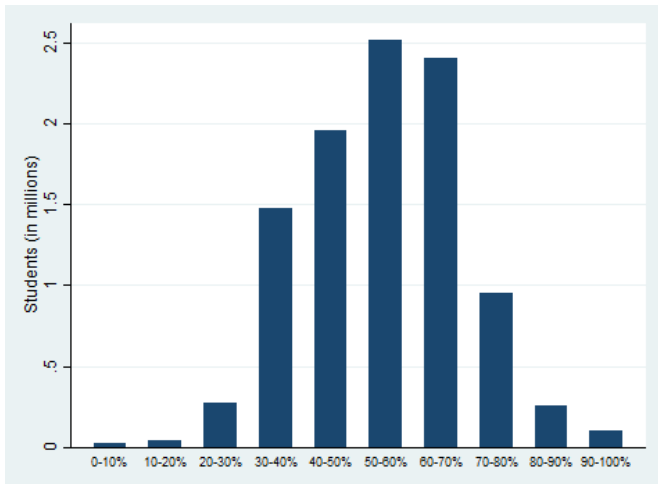


Figure A2. Student Enrollment by District's Black Student Population

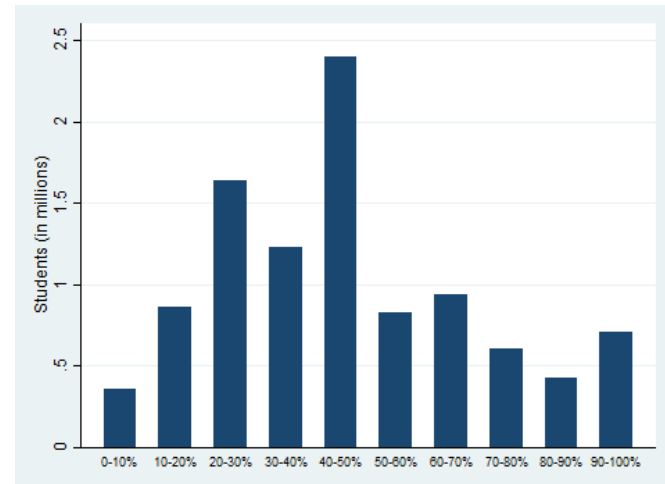


Figure A3. Student Enrollment by School's Free Lunch Eligibility

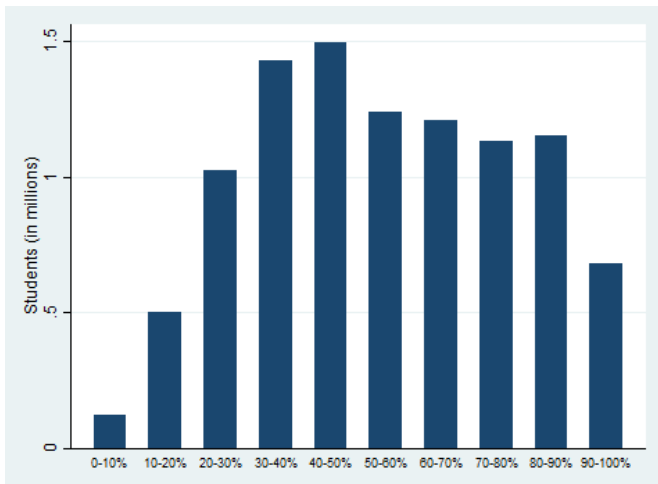


Figure A4. Student Enrollment by School's Black Student Population

