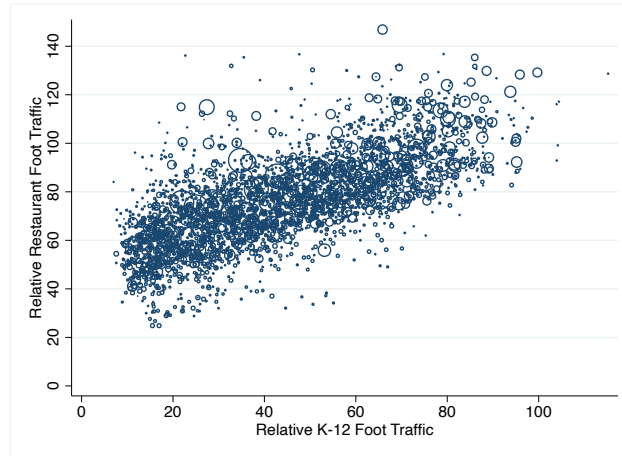


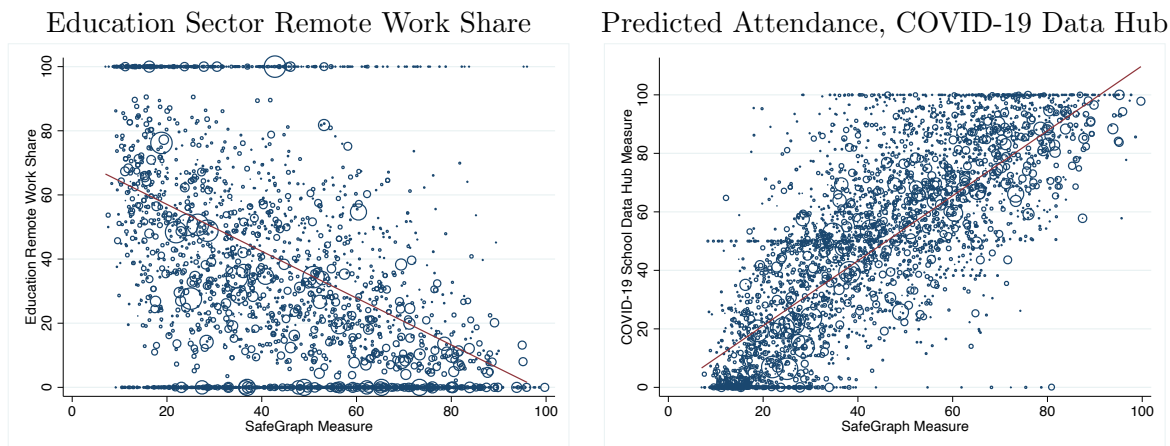
## A Additional Figures and Tables

Figure A1: Variation in Restaurant and School Foot Traffic



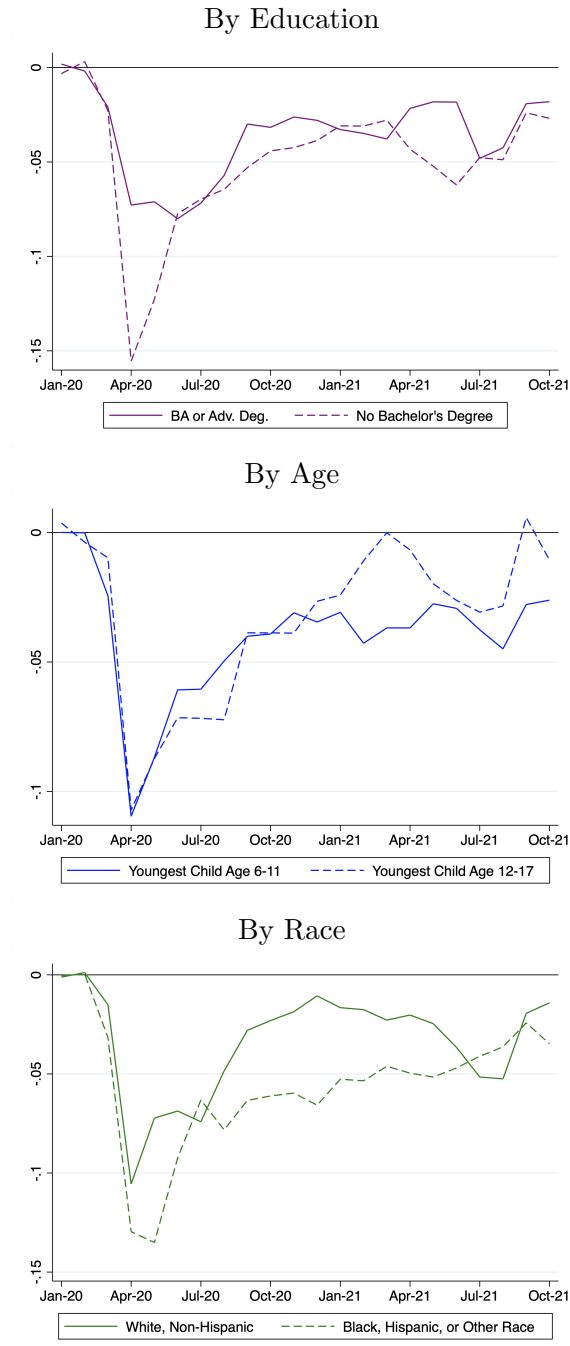
Notes: Data are from SafeGraph. The scatter plot shows variation in the pooled sample of area-month observations. Markers are weighted by area population.

Figure A2: Scatter Plots: SafeGraph School Reopenings vs. Other Reopenings Proxies



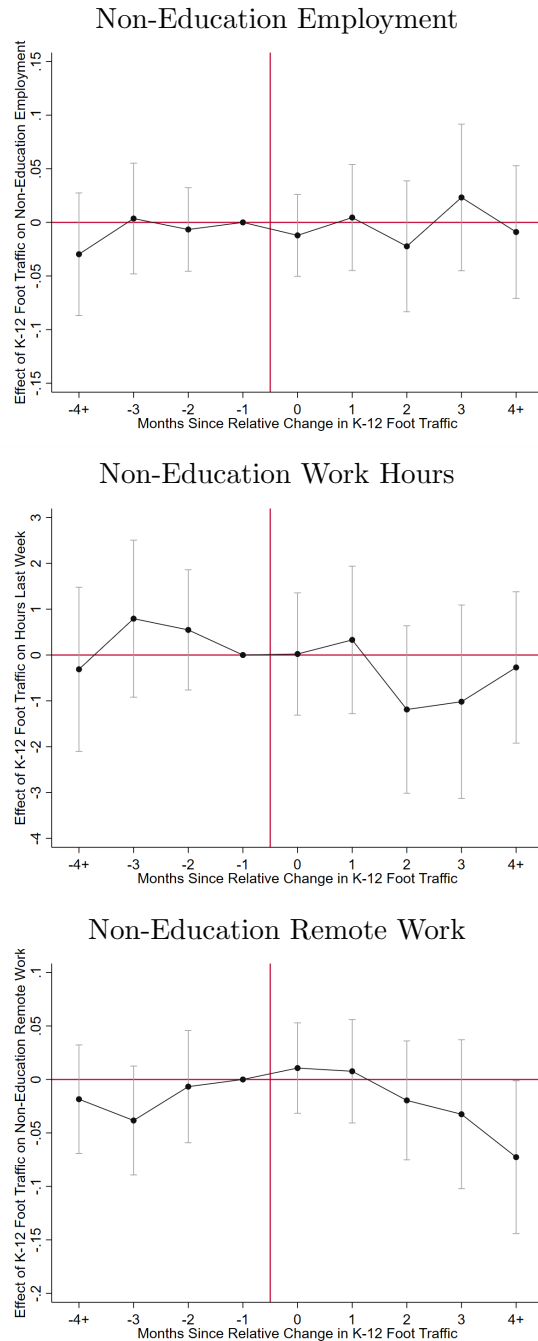
Notes: Data sources are SafeGraph, the Current Population Survey, and <https://www.covidschooldatahub.com>. The scatter plots show variation in the pooled sample of area-month observations. Markers are weighted by area population.

Figure A3: Non-Education Employment of Married Women with School-Aged Children Relative to Jan/Feb 2020, Subgroups



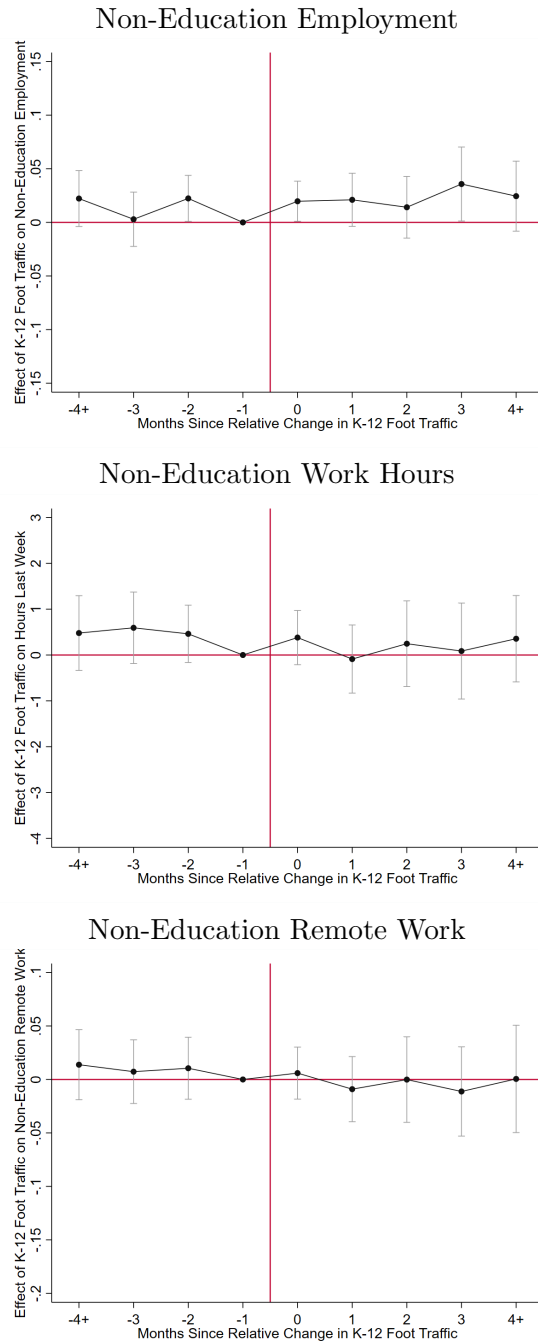
Notes: Data source is the Current Population Survey.

Figure A4: Dynamic Effects of K-12 School Reopenings on Labor Supply of Unmarried Women with School-Aged Children: Event Study Estimates



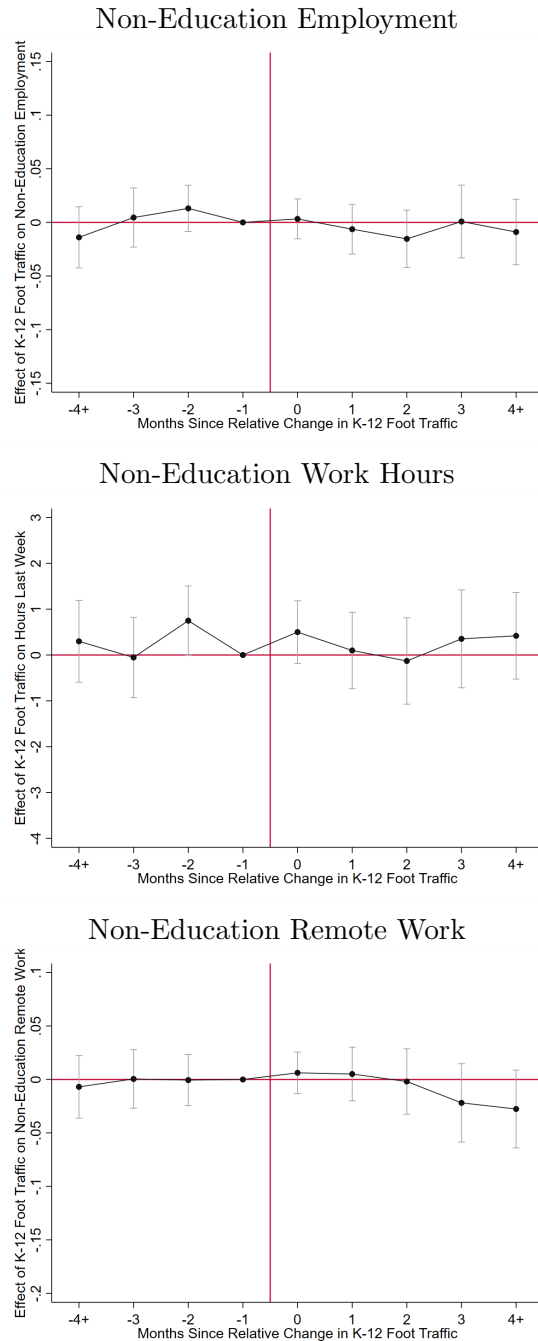
Notes: Vertical bars represent 95% confidence intervals. We include controls for area fixed effects, year-by-month fixed effects, and the set of individual and COVID-19-related observable controls listed in the notes to Table 2. Estimates are weighted using the CPS individual sample weights.

Figure A5: Dynamic Effects of K-12 School Reopenings on Labor Supply of Women with No Children: Event Study Estimates



Notes: Vertical bars represent 95% confidence intervals. We include controls for area fixed effects, year-by-month fixed effects, and the set of individual and COVID-19-related observable controls listed in the notes to Table 2. Estimates are weighted using the CPS individual sample weights.

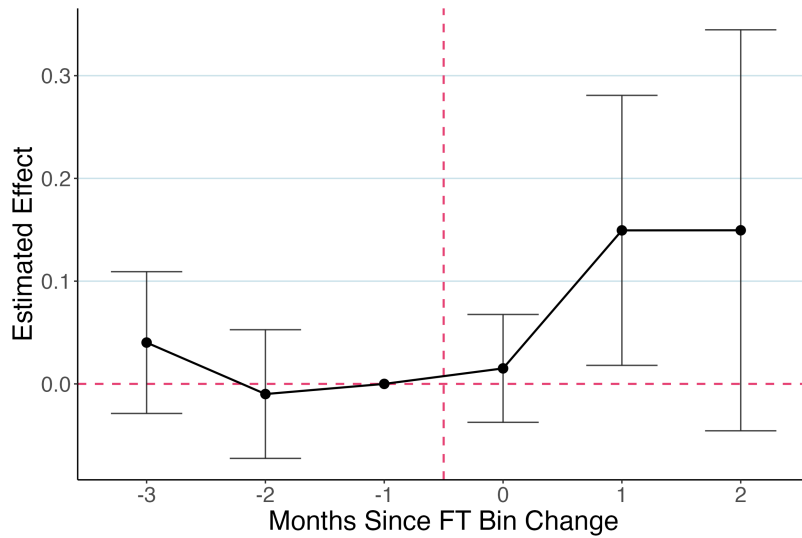
Figure A6: Dynamic Effects of K-12 School Reopenings on Labor Supply of Married Men with School-Aged Children: Event Study Estimates



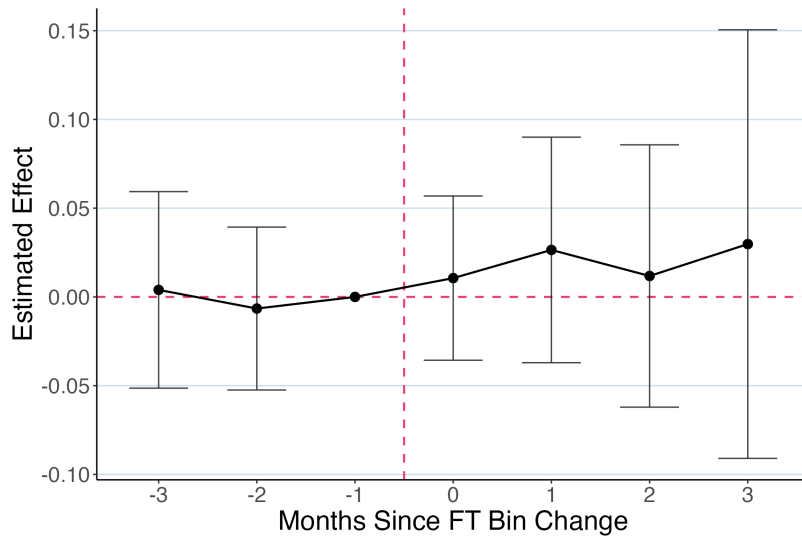
Notes: Vertical bars represent 95% confidence intervals. We include controls for area fixed effects, year-by-month fixed effects, and the set of individual and COVID-19-related observable controls listed in the notes to Table 2. Estimates are weighted using the CPS individual sample weights.

Figure A7: Event-Study Analysis of K-12 School Foot Traffic and Non-Education Employment (at Work), Using de Chaisemartin and D’Haultfoeulle Estimator

Non-Education Employment, Married Women with School-Aged Children



Non-Education Employment, Women with No Children



Notes: Estimates are obtained using the de Chaisemartin and D’Haultfoeulle estimator. The continuous treatment is binned into relative K-12 foot traffic categories of 0-24, 25-49, 50-74, 75-99, and 100+. We include controls for area fixed effects, year-by-month fixed effects, and the set of individual and COVID-19-related observable controls listed in the notes to Table 2. Estimates are weighted using the CPS individual sample weights.

Table A1: Sample Means - Main Samples

	Women			Men
	Married Kids 6-17	Unmarried Kids 6-17	No Kids	Kids 6-17
K12 Relative to Winter 2020	58.05	59.04	57.39	58.32
Restaurants Relative to Winter 2020	77.99	78.43	76.69	78.20
Employed, Non-K12-Sector	0.58	0.67	0.68	0.86
Employed, at Work, Non-K12-Sector	0.55	0.64	0.66	0.84
Hours Last Week, Non-K12-Sector	36.67	37.42	38.88	42.90
Worked Remotely, Non-K12-Sector	0.26	0.17	0.27	0.20
Underemployed, Childcare Reasons	0.28	0.16	0.08	0.02
NILF, Family Reasons	0.26	0.14	0.08	0.02
Part Time, Childcare Reasons	0.02	0.02	0.00	0.00
Unemployed, Non-K12-Sector	0.04	0.08	0.06	0.04
Not in Labor Force	0.29	0.22	0.21	0.07
Frontline Industry	0.18	0.26	0.20	0.12
Occupation Remote Share	0.45	0.38	0.43	0.40
Employed, at Work, K-12 Education Sector	0.10	0.05	0.06	0.03
Hours Last Week, K-12 Education Sector	37.53	38.51	40.09	42.21
Worked Remotely, K-12 Education Sector	0.29	0.29	0.33	0.30
White	0.59	0.41	0.59	0.57
Black	0.08	0.27	0.15	0.10
Other Race	0.11	0.05	0.10	0.09
Hispanic	0.22	0.27	0.17	0.24
Less the High School	0.08	0.12	0.06	0.11
High School Grad	0.20	0.31	0.23	0.27
Some College	0.24	0.34	0.26	0.24
Bachelor's Degree	0.28	0.15	0.29	0.23
Advanced Degree	0.19	0.08	0.16	0.15
Age	40.86	38.32	39.43	41.78
Observations	131182	55884	221905	140126

Notes: The CPS sample includes all individuals between the ages of 25 and 54. Observations are weighted using CPS individual sample weights. Hours and rates of remote work are estimated conditional on employment. K-12 and restaurant foot traffic are shown relative to a baseline value of 100 and can be interpreted as (proxies for) “percent reopen relative to pre-pandemic levels”.

Table A2: Sample Means - Married Women with School-Aged Kids

	College	No College	Youngest Kid 6-11	Youngest Kid 12-17	White	Non-White
K12 Relative to Winter 2020	57.12	58.89	57.80	58.04	59.95	55.32
Restaurants Relative to Winter 2020	76.77	79.11	77.67	78.00	80.05	75.05
Employed, Non-K12-Sector	0.61	0.55	0.57	0.62	0.60	0.55
Employed, at Work, Non-K12-Sector	0.59	0.53	0.54	0.60	0.58	0.52
Hours Last Week, Non-K12-Sector	37.27	36.07	36.09	37.57	36.34	37.19
Worked Remotely, Non-K12-Sector	0.38	0.13	0.28	0.24	0.27	0.24
Underemployed, Childcare Reasons	0.20	0.34	0.31	0.19	0.24	0.33
NILF, Family Reasons	0.18	0.32	0.29	0.19	0.21	0.31
Part Time, Childcare Reasons	0.02	0.02	0.03	0.01	0.02	0.02
Unemployed, Non-K12-Sector	0.03	0.06	0.04	0.04	0.03	0.06
Not in Labor Force	0.21	0.37	0.32	0.23	0.25	0.35
Frontline Industry	0.18	0.18	0.18	0.19	0.18	0.18
Occupation Remote Share	0.50	0.38	0.45	0.45	0.47	0.41
Employed, at Work, K-12 Education Sector	0.16	0.04	0.08	0.11	0.12	0.06
Hours Last Week, K-12 Education Sector	38.71	33.28	37.17	38.65	37.62	37.27
Worked Remotely, K-12 Education Sector	0.32	0.17	0.30	0.27	0.27	0.33
White	0.68	0.51	0.60	0.61	1.00	0.00
Black	0.07	0.08	0.08	0.07	0.00	0.19
Other Race	0.15	0.08	0.12	0.11	0.00	0.27
Hispanic	0.10	0.33	0.21	0.20	0.00	0.54
Less the High School	0.00	0.16	0.07	0.08	0.03	0.16
High School Grad	0.00	0.38	0.18	0.21	0.16	0.25
Some College	0.00	0.46	0.23	0.25	0.26	0.21
Bachelor's Degree	0.59	0.00	0.31	0.28	0.33	0.22
Advanced Degree	0.41	0.00	0.22	0.19	0.22	0.16
Age	42.22	39.62	37.12	45.54	41.20	40.38
Observations	62492	68690	123328	43149	86100	45082

Notes: The CPS sample includes all individuals between the ages of 25 and 54. Observations are weighted using CPS individual sample weights. Hours and rates of remote work are estimated conditional on employment. K-12 and restaurant foot traffic are shown relative to a baseline value of 100 and can be interpreted as (proxies for) “percent reopen relative to pre-pandemic levels”.



Table A3: Triple-Differences (Fully Interacted) Model: Married Women with School-Aged Kids vs. Comparison Groups

	Employed, At Work	Hours Last Week	Remote Work
K12 Foot Traffic	0.004 (0.007)	-0.006 (0.211)	-0.000 (0.008)
K12 Traffic x Schoolkids	0.031** (0.014)	0.997** (0.460)	-0.027 (0.017)
Observations	548623	374540	237210
R2	0.069	0.055	0.198
YMean	0.678	39.604	0.234

Notes: Employment measures omit the K-12 sector. Employment is defined by labor force status “employed, at work”. The treatment variable is K-12 weekday foot traffic relative to an area’s average K-12 weekday foot traffic in Jan/Feb 2020. All coefficients are scaled up by 58.6—the difference between the 5th and 95th percentile of area reopening shares. All regressions include area fixed effects and census division-specific year-month fixed effects. Individual control variables include age, race (fractions Black Non-Hispanic, other Non-Hispanic, and Hispanic), education (less than high school, high school graduate, some college, bachelor’s degree, advanced degree), and marital status. COVID-19 controls include an indicator for positive cumulative deaths per capita and a continuous measure of cumulative deaths per capita. Observations are weighted using CPS individual sample weights. Robust standard errors, which allow for clustering at the area level, are shown in parentheses. Significance at 1%, 5%, and 10% levels are indicated by \*\*\*, \*\*, and \*, respectively.

Table A4: Additional Labor Market Outcomes

	Employed, Including Not at Work	Log Hours	Unemp. Rate	Not in Labor Force	Self Employed
Panel A: Primary Treated Group					
Married Women with School-Aged Children					
K12 Foot Traffic	0.021* (0.012)	0.053*** (0.018)	-0.003 (0.007)	-0.022* (0.011)	0.003 (0.007)
Observations	131051	74124	80129	131051	131051
R2	0.054	0.045	0.049	0.102	0.028
YMean	0.577	3.511	0.044	0.291	0.071
Panel B: Comparison Groups					
Unmarried Women with School-Aged Children					
K12 Foot Traffic	0.003 (0.020)	-0.012 (0.026)	-0.008 (0.013)	-0.008 (0.016)	-0.008 (0.009)
Observations	55821	35964	40567	55821	55821
R2	0.076	0.062	0.066	0.094	0.049
YMean	0.667	3.551	0.083	0.217	0.050
Women without Children					
K12 Foot Traffic	0.009 (0.010)	0.001 (0.011)	-0.003 (0.006)	0.005 (0.009)	0.001 (0.005)
Observations	221767	146112	159279	221767	221767
R2	0.054	0.025	0.040	0.086	0.024
YMean	0.678	3.597	0.057	0.212	0.053
Men with Children Ages 6-17					
K12 Foot Traffic	-0.013 (0.009)	0.014 (0.010)	-0.007 (0.006)	0.011 (0.007)	0.008 (0.008)
Observations	139984	118340	126416	139984	139984
R2	0.051	0.030	0.046	0.051	0.032
YMean	0.863	3.712	0.044	0.067	0.120

Notes: See Table 2 notes and Section 2.3 for specification details. Significance at 1%, 5%, and 10% levels are indicated by \*\*\*, \*\*, and \*, respectively.

Table A5: Women with School-Aged Children, by Presence of Additional Caregivers

	Employed, At Work	Hours Last Week	Remote Work
Panel A: Married, Three or More Adults in Household			
K12 Foot Traffic	0.077*** (0.026)	1.517* (0.808)	0.004 (0.029)
Observations	31073	17711	11329
R2	0.105	0.119	0.211
YMean	0.559	36.959	0.201
Panel B: Single, One Adult in Household			
K12 Foot Traffic	-0.001 (0.030)	-0.662 (0.787)	-0.015 (0.027)
Observations	27476	18048	11367
R2	0.107	0.118	0.237
YMean	0.653	37.340	0.198
Panel C: Single, Two or More Adults in Household			
K12 Foot Traffic	0.002 (0.028)	0.632 (0.850)	0.012 (0.025)
Observations	28345	17916	11393
R2	0.101	0.111	0.196
YMean	0.626	37.503	0.150

Notes: See Table 2 notes and Section 2.3 for specification details. Significance at 1%, 5%, and 10% levels are indicated by \*\*\*, \*\*, and \*, respectively.

Table A6: Alternative Samples

Panel A: Employed, At Work				
	Married Women With Kids	Unmarried Women With Kids	Women No Kids	Men With Kids
CPS-Identified Counties and Metro Areas Only				
K12 Foot Traffic	0.041*** (0.014)	0.009 (0.021)	0.006 (0.009)	-0.004 (0.010)
Dropping March and April 2020				
K12 Foot Traffic	0.030** (0.012)	0.003 (0.019)	0.004 (0.008)	0.003 (0.008)
Panel B: Work Hours				
	Married Women With Kids	Unmarried Women With Kids	Women No Kids	Men With Kids
CPS-Identified Counties and Metro Areas Only				
K12 Foot Traffic	0.807* (0.419)	0.268 (0.622)	0.131 (0.248)	0.498 (0.334)
Dropping March and April 2020				
K12 Foot Traffic	0.644* (0.365)	-0.334 (0.512)	0.008 (0.222)	0.240 (0.295)
Panel C: Remote Work				
	Married Women With Kids	Unmarried Women With Kids	Women No Kids	Men With Kids
CPS-Identified Counties and Metro Areas Only				
K12 Foot Traffic	-0.041** (0.017)	0.022 (0.019)	-0.001 (0.009)	0.005 (0.011)
Dropping March and April 2020				
K12 Foot Traffic	-0.031** (0.014)	0.007 (0.016)	-0.003 (0.008)	0.003 (0.009)

Notes: See Table 2 notes and Section 2.3 for specification details. Significance at 1%, 5%, and 10% levels are indicated by \*\*\*, \*\*, and \*, respectively.

Table A7: Alternative Specifications

Panel A: Employed, At Work				
	Married Women With Kids	Unmarried Women With Kids	Women No Kids	Men With Kids
Dropping Restaurant Traffic and COVID Deaths				
K12 Foot Traffic	0.036*** (0.011)	0.024 (0.018)	0.016** (0.008)	0.003 (0.008)
Adding Retail Traffic and COVID Cases				
K12 Foot Traffic	0.030** (0.012)	0.004 (0.020)	0.003 (0.008)	-0.002 (0.009)
Panel B: Work Hours				
	Married Women With Kids	Unmarried Women With Kids	Women No Kids	Men With Kids
Dropping Restaurant Traffic and COVID Deaths				
K12 Foot Traffic	0.349 (0.331)	0.065 (0.493)	0.079 (0.205)	0.325 (0.255)
Adding Retail Traffic and COVID Cases				
K12 Foot Traffic	0.784** (0.381)	0.131 (0.537)	-0.014 (0.224)	0.309 (0.303)
Panel C: Remote Work				
	Married Women With Kids	Unmarried Women With Kids	Women No Kids	Men With Kids
Dropping Restaurant Traffic and COVID Deaths				
K12 Foot Traffic	-0.031** (0.014)	0.011 (0.016)	0.000 (0.008)	0.005 (0.009)
Adding Retail Traffic and COVID Cases				
K12 Foot Traffic	-0.028* (0.014)	0.008 (0.017)	0.002 (0.008)	0.005 (0.009)

Notes: See Table 2 notes and Section 2.3 for specification details. Significance at 1%, 5%, and 10% levels are indicated by \*\*\*, \*\*, and \*, respectively.